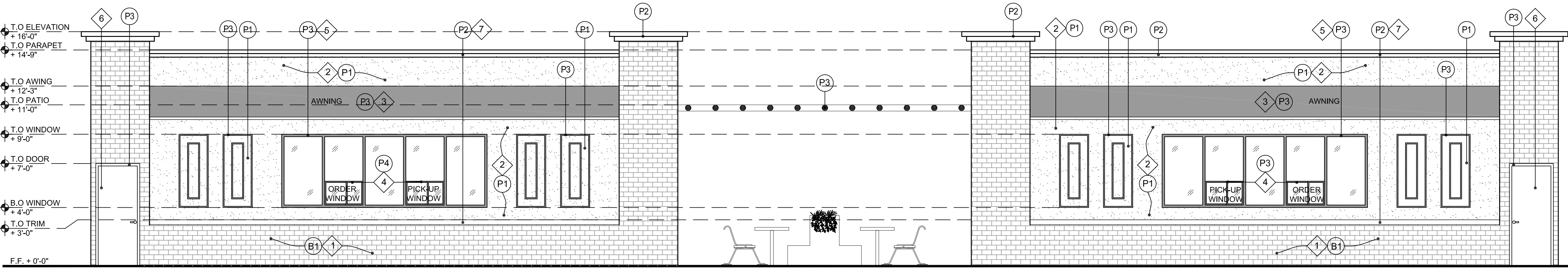


1 PROPOSED FLOOR PLAN
SCALE: 1/4" = 1'



DOOR SCHEDULE

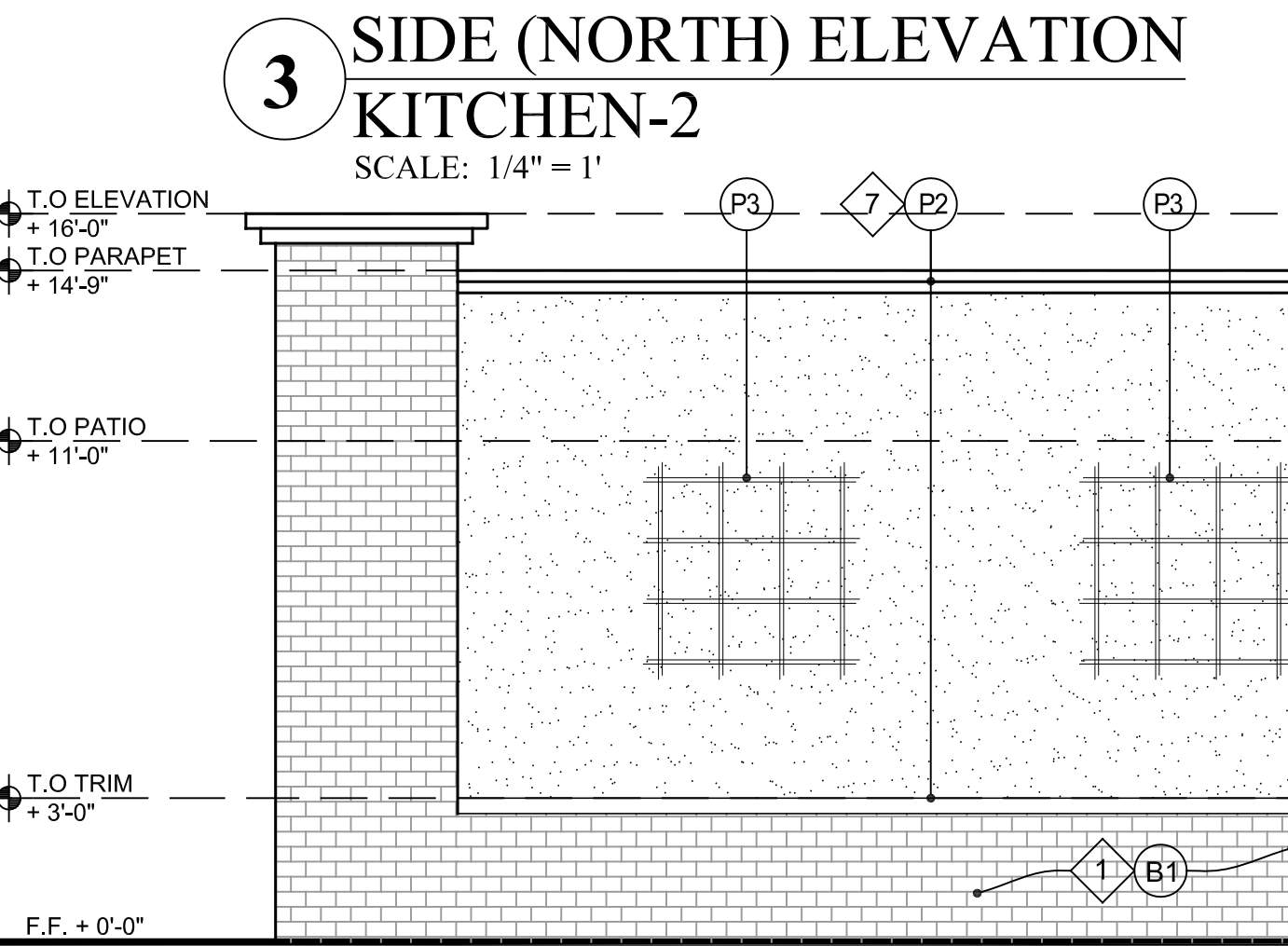
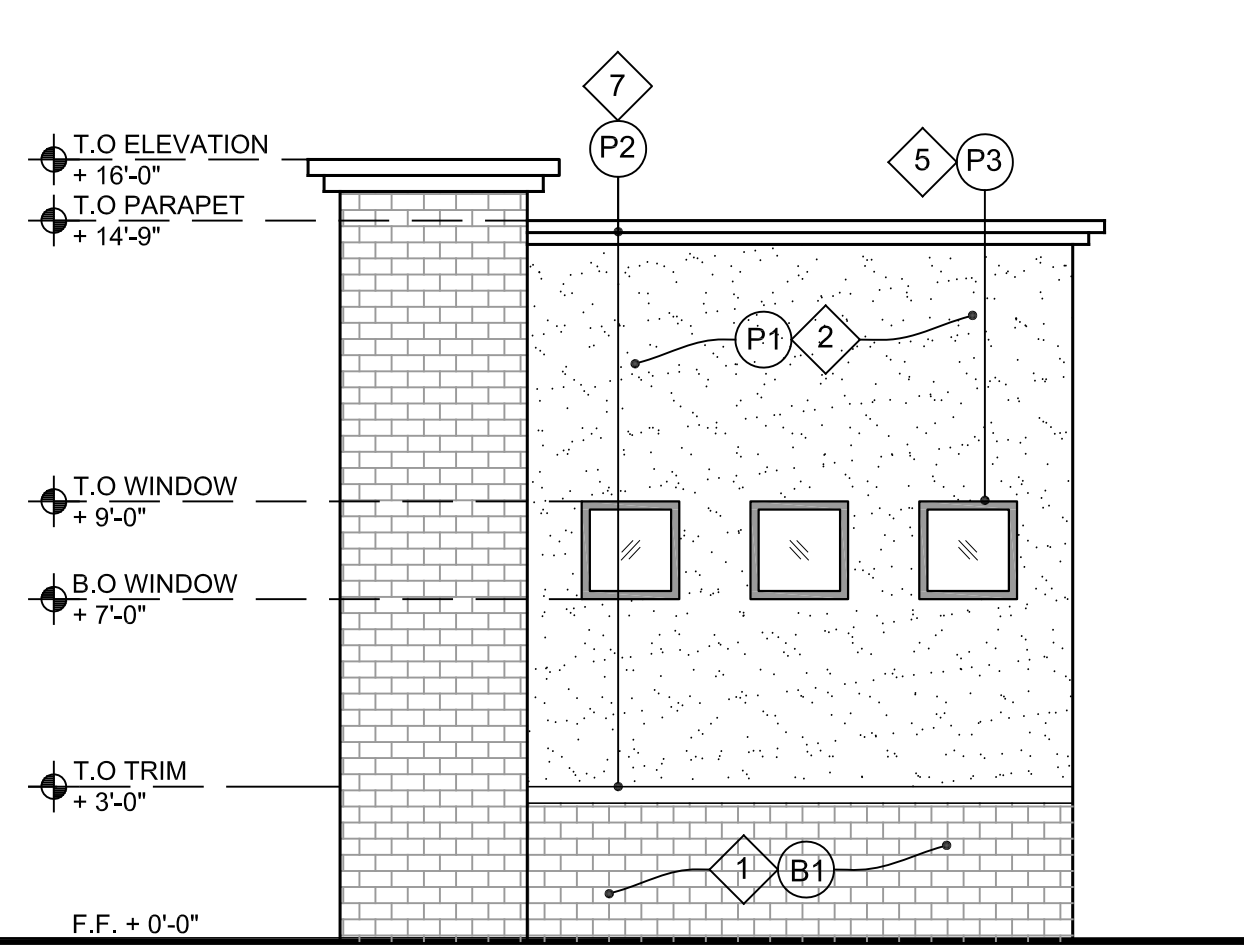
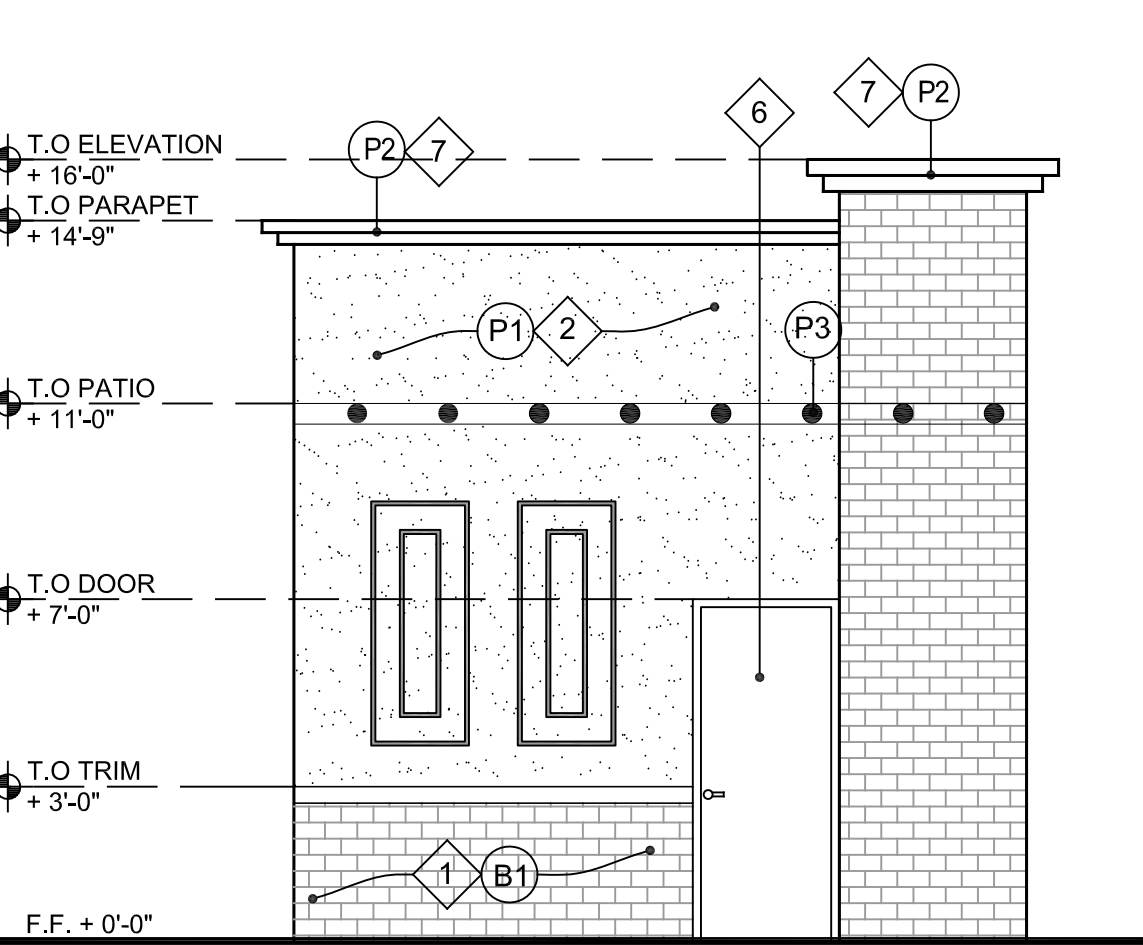
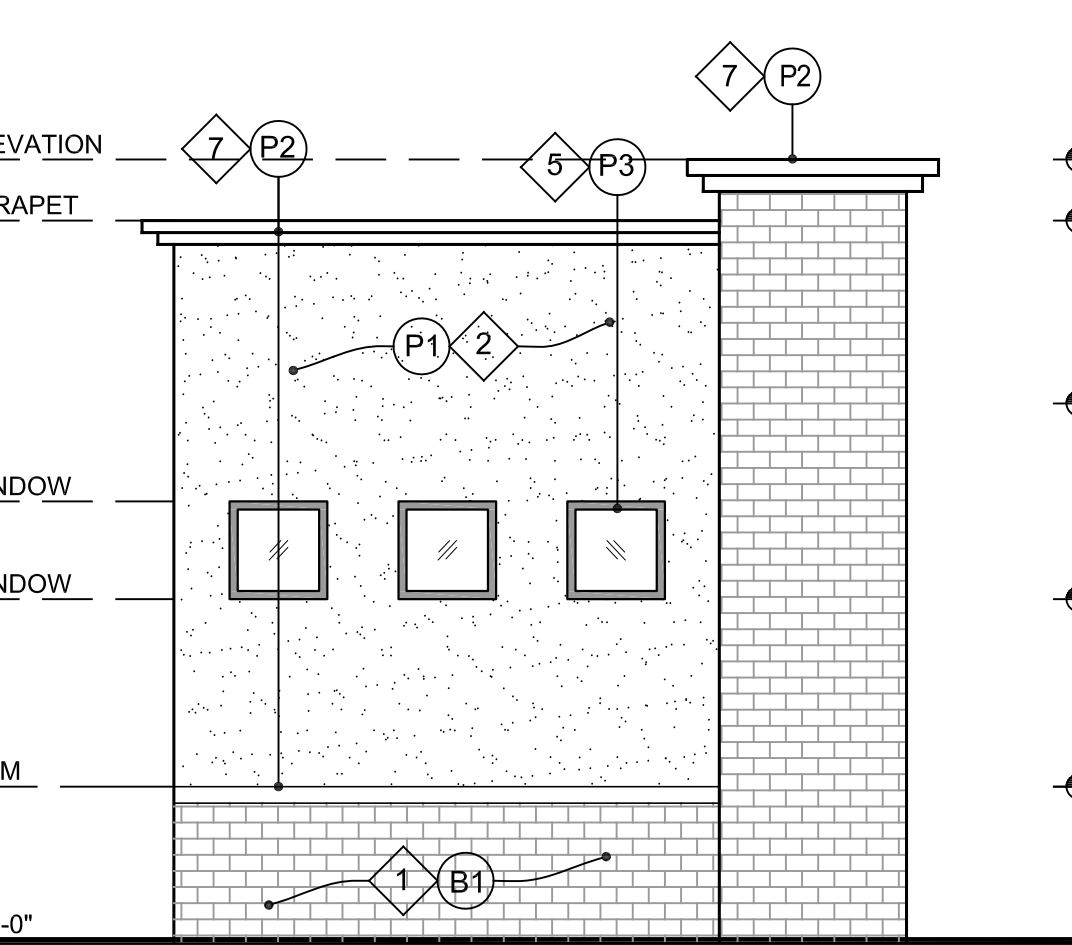
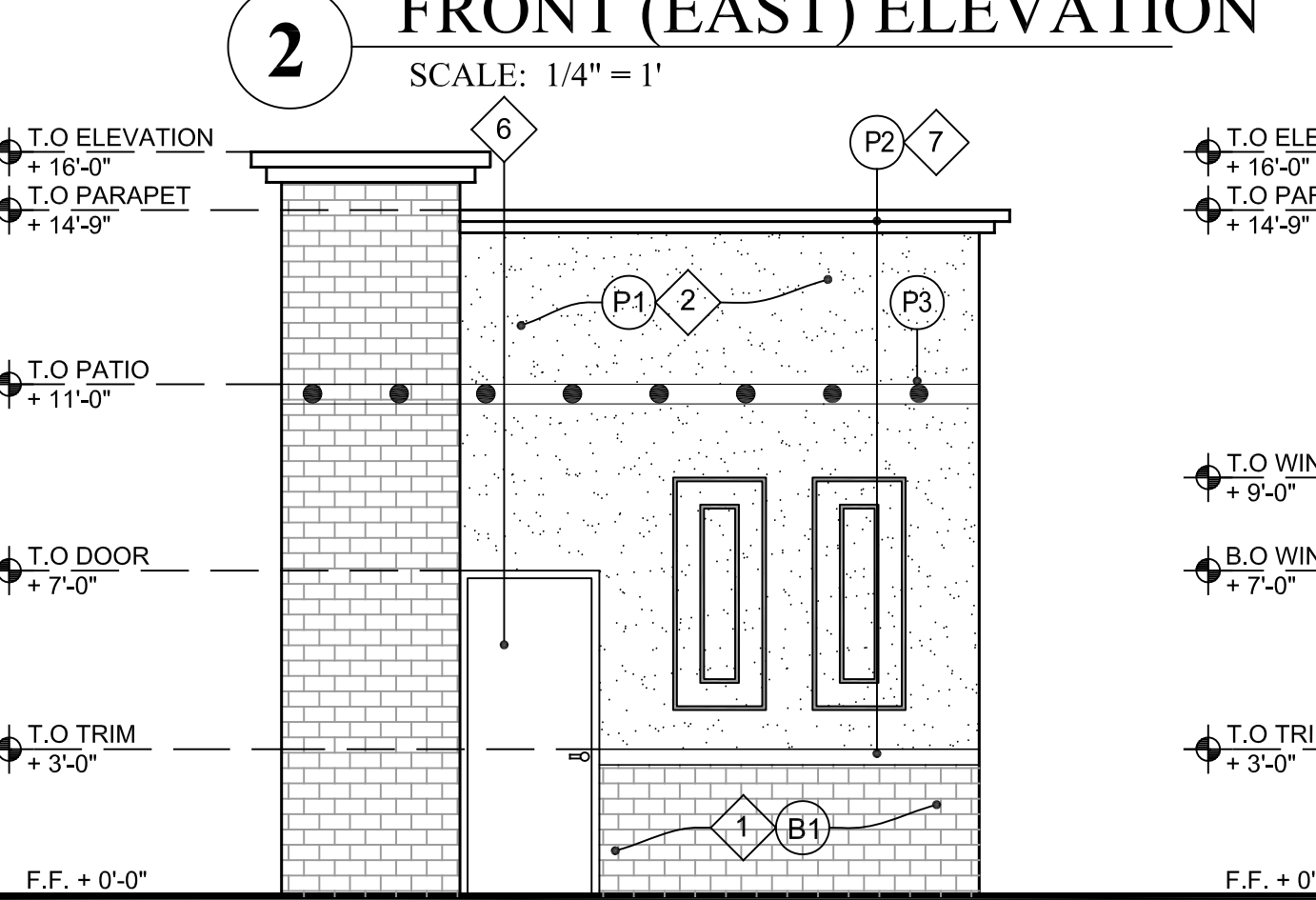
#	SIZE	REMARKS
D1	3'-0" x 7'-0"	ALUMINUM
D2	3'-0" x 7'-0"	SOLID CORE WOOD

- MATERIAL KEY NOTES:**
- ◆ BRICK BASE
 - ◆ 3 COAT STUCCO SYSTEM
 - ◆ AWNING
 - ◆ ORDER/ PICK-UP WINDOWS (ALUMINUM)
 - ◆ STORE FRONT SYSTEM (ALUMINUM)
 - ◆ INSULATED DOOR & FRAME (HOLLOW METAL)
 - ◆ CORNICE

EXTERIOR COLOR SCHEDULE:

FIN. #	MATERIAL	LEGEND	COLOR OR TYPE	DESCRIPTION & ITEM CODES
B1	BRICK	BASE	IRON MOUNTAIN	H.C. MUDDOX - IRON MOUNTAIN
P1	SEMI-GLOSS PAINT	BODY 1	NEUTRAL GROUND	SHERWIN-WILLIAMS # SW7568
P2	SEMI-GLOSS PAINT	TRIM	HIGH REFLECTIVE WHITE	SHERWIN-WILLIAMS # SW7757
P3	SEMI-GLOSS PAINT	ACCENT - 2	CHILLED WINE	JONES-BLAIR SEMI-GLOSS URETHANE #A3N-D10101

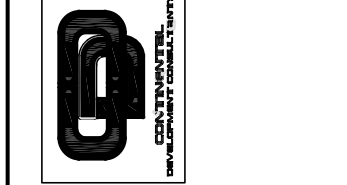
NOTE:
ROOF MOUNTED EQUIPMENT (RME) TO BE SCREENED BEHIND HIGH PARAPET



REVISIONS:

NO.	REVISION	DATE

Continental Development Consultants, Inc.
7473 W Lake Mead Blvd, Ste 100, Las Vegas, NV 89128
Phone (702)287-0347 • FAX (702)664-6237
Email: Contact@continentaldc.com
Civil Engineering • Land Planning and Zoning Entitlements • Building Design and Improvements • Construction Consulting



TITLE KIOSKS - FLOOR PLAN AND ELEVATIONS
PROJECT ONE THIRTEEN - MAIN PLAZA
1490 EAST MAIN STREET
WOODLAND, CA 95776

DATE: 05/24/2018
JOB: RS-WL-01
DWG BY: DV
CKD BY: SPK

KS-1