

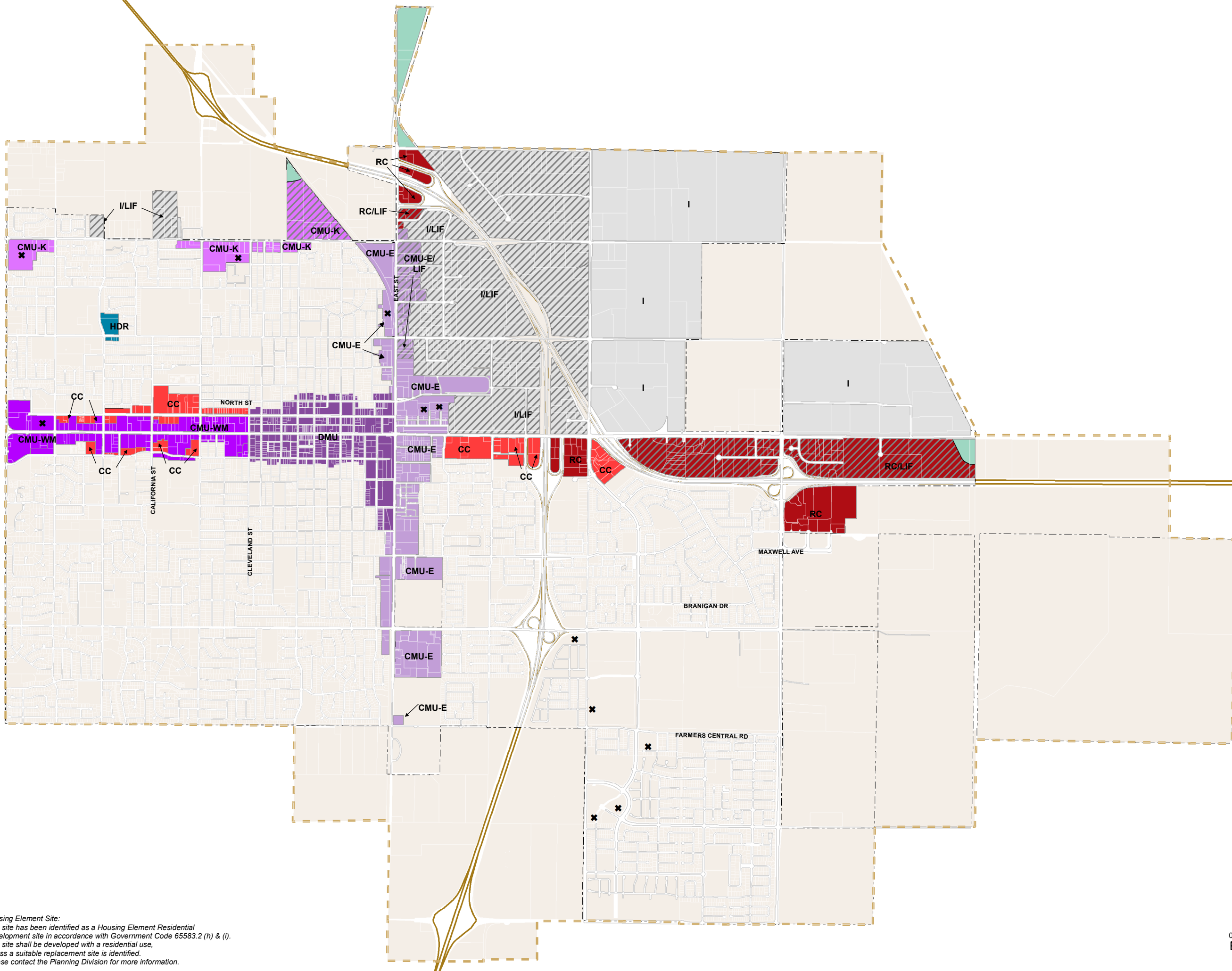
# General Plan Land Use and Interim Zoning

## General Plan Land Use

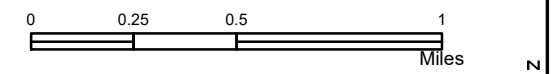
- Corridor Mixed Use - East St
- Corridor Mixed Use - Kentucky
- Corridor Mixed Use - West Main
- Downtown Mixed Use— see Downtown Specific Plan
- Community Commercial
- Regional Commercial
- High Density Residential
- Flood Study Area
- Industrial
- Light Industrial Flex

## Interim Zoning

- CMU-WM Corridor Mixed Use West Main
- CMU-E Corridor Mixed Use East Street
- CMU-K Corridor Mixed Use Kentucky
- CC Community Commercial
- RC Regional Commercial
- HDR High Density Residential
- LIF Light Industrial Flex Overlay
- \* Housing Element site
- Urban Limit Line
- City Boundary



**Housing Element Site:**  
 This site has been identified as a Housing Element Residential Development site in accordance with Government Code 65583.2 (h) & (i). This site shall be developed with a residential use, unless a suitable replacement site is identified. Please contact the Planning Division for more information.



Date: 8/19/2020